



**FISHER
WRATHALL**
COMMERCIAL



To Let

**3-5 Perpignan Way, Lancaster, LA1 1NE
£1 Price On Application**



3-5 Perpignan Way, Lancaster, LA1 1NE

£1 Price On Application



LOCATION

Lancaster, one of England's 13 Heritage Cities, has a City Centre population of 48,085 with a Local Authority population of 48,085 (source: ONS – 2021 Census). Lancaster University, ranked in the UK's Top 10 Universities by the Guardian for 2021, is home to almost 17,000 students with almost a third of those being from overseas.

Anchored by Next and Boots, St Nics is a covered, un-gated scheme that merges into prime Penny Street and benefits from a 300 space undercroft car park. The occupier line up offers a mix of retailers including Lush, o2, Superdrug, Costa, The Entertainer, Trespass and HMV amongst others.

The subject premises are in a prominent corner location adjacent to Trespass, opposite The Entertainer and by the car park access.

ACCOMMODATION

The premises comprise the following net internal floor areas:

Ground Floor Area - 890 sq ft

First Floor Area - 779 sq ft

TERMS

The shop unit is available on a new effectively full repairing and insuring lease.

RENT

Upon Application

SERVICE CHARGE

The current service charge estimate is £12,536 per annum.

Further details upon request.

RATES

Rateable Value (2023) £23,500

Interested parties are advised to make their own enquiries with the Local Authority (Tel: 03000 501 501) or visit www.voa.gov.uk.

COSTS

All figures quoted are subject to VAT where applicable. The ingoing party is to be responsible for their own legal costs incurred in the transaction where applicable.

EPC

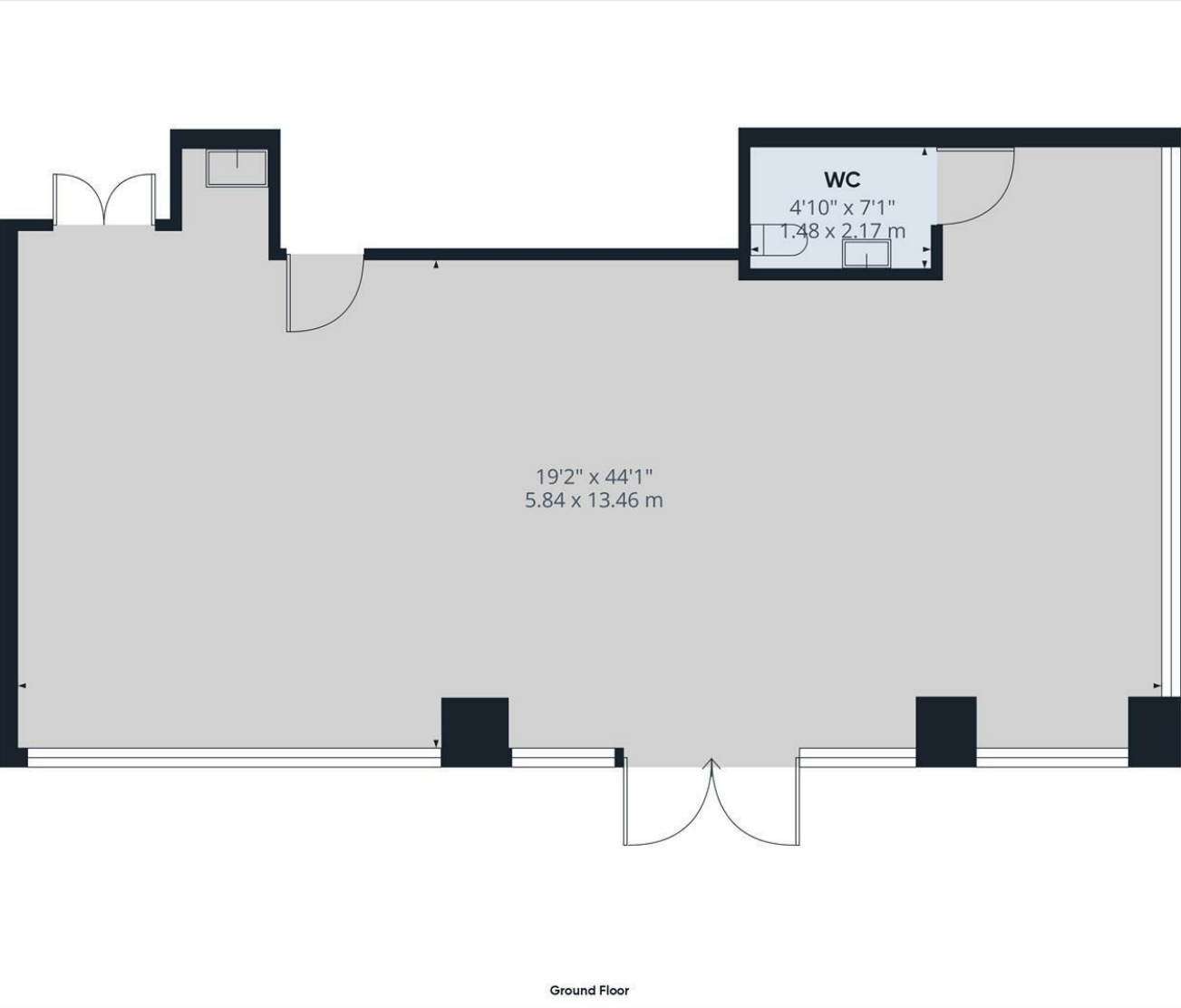
The property has an EPC rating of 107 (E). A copy of the EPC is available upon request.

SUBJECT TO CONTRACT & WITHOUT PREJUDICE





Energy Efficiency Rating		
	Current	Potential
Very energy efficient - lower running costs		
(92 plus) A		
(81-91) B		
(69-80) C		
(55-68) D		
(39-54) E		
(21-38) F		
(1-20) G		
Not energy efficient - higher running costs		
England & Wales		EU Directive 2002/91/EC



MIGHTYHOUSE
ESTATES

Approximate total area⁽¹⁾
916.11 ft²
85.11 m²

(1) Excluding balconies and terraces

While every attempt has been made to ensure accuracy, all measurements are approximate, not to scale. This floor plan is for illustrative purposes only.
Calculations are based on RICS IPMS 3C standard.

GIRAFFE360

These particulars, whilst believed to be accurate are set out as a general outline only for guidance and do not constitute any part of an offer or contract. Intending purchasers should not rely on them as statements of representation of fact, but must satisfy themselves by inspection or otherwise as to their accuracy. No person in this firm's employment has the authority to make or give any representation or warranty in respect of the property.